

# ASX Announcement & Media Release

Monday, 12 October 2015

## Fast Facts

ASX Code: RNS

Shares on issue: 459.6 million

Market Cap: ~A\$12 million

Cash: ~A\$2.3 million (30 Sep 2015)

## Board & Management

Alan Campbell, Non-Exec Chairman

Dave Kelly, Non-Exec Director

Justin Tremain, Managing Director

Craig Johnson, Exploration Manager

Brett Dunnachie, CFO & Co. Sec.

Vireak Nouch, Country Manager

## Company Highlights

- Targeting large gold systems in an emerging Intrusive Related Gold province in Cambodia
- First mover in a new frontier
- Okvau Deposit (100% owned): Indicated and Inferred Mineral Resource Estimate of 1.13Moz at 2.2g/t Au (refer Table One)
- PFS completed and demonstrates high grade, low cost, compelling development economics:
  - 830,000ozs in single pit
  - Production to 100,000ozs pa over 8yr mine life (average 91,500oz pa LOM)
  - AISC US\$611/oz first 5 years (average US\$735/oz LOM)
  - NPV<sub>(5%)</sub> US\$174M
  - IRR 35% pa
  - Payback ~2.6 years
- Clear pathway to development
- Significant resource growth potential. Okvau Deposit remains 'open' and multiple nearby high priority, untested targets

## Registered Office

78 Churchill Avenue  
SUBIACO WA 6008

T: +61 8 9286 6300

F: +61 8 9286 6333

W: [www.renaissanceminerals.com.au](http://www.renaissanceminerals.com.au)

E: [admin@renaissanceminerals.com.au](mailto:admin@renaissanceminerals.com.au)



Renaissance  
minerals limited

## Exploration Review Highlights New Targets

- Review of geophysical, geochemical and geological data for the Okvau project identifies new targets with considerable exploration potential
- Numerous new target areas with geophysical features analogous to the 1.13Moz Okvau Deposit (refer Table One) setting with strong proximal gold-in-soil anomalies that are untested with drilling
- Induced Polarization (IP) geophysical surveys planned to commence in late October/early November 2015 to map sulphide positions for drilling
- Ministry of Environment grants approval of the Terms of Reference for the project ESIA

**Renaissance Minerals Limited (ASX: RNS)** ('Renaissance') has been undertaking a review of all historical geophysical, geochemical and geological data for the Okvau project in Cambodia. This review has identified considerable upside scope for additions to the currently defined 1.13Moz resource estimate at the Okvau Deposit (refer Table One).

Regionally, numerous large remanent magnetic responses, analogous with the remanent magnetic response at the Okvau Deposit, highlight large hydrothermal sulphide zones amenable to gold mineralisation (refer Figure One). The areas are all associated with proximal gold-in-soil anomalism and are untested by drilling. These target areas are all within close proximity to the Okvau Deposit and offer exceptional new discovery potential for Renaissance.

At the Okvau Deposit, the area north-east and north along strike from the existing resource envelope demonstrates scope for further extensional gold mineralisation that can rapidly add to the existing 1.13Moz resource estimate at the Okvau Deposit (refer Figure Two).

Renaissance Managing Director, Justin Tremain said:

***"Renaissance has the benefit of extensive geophysical, geochemical and geological data sets. A review of these datasets is defining new targets, all in close proximity to the 1.13Moz Okvau Deposit.***

***Reinterpretation of magnetics and gradient array IP at the Okvau Deposit confirms the potential for considerable growth to the resource which is backed up by strongly anomalous surface geochemistry.***

***The recognition of important regional structural controls to mineralisation has identified a number of additional target areas. These target areas were the subject of recent surface soil geochemistry that returned anomalous gold-in-soils. Several of these targets have received no drill testing whatsoever.***

***Renaissance is planning IP surveys in the coming weeks, both gradient array and dipole-dipole, at the Okvau Deposit to effectively map the positions of the probable sulphide responses to allow for follow-up drilling of the strongest and most extensive responses. A number of other target areas will also be considered for IP survey coverage immediately following the Okvau surveys.***

***Renaissance's 100% owned 400km<sup>2</sup> of tenure undoubtedly provides considerable exploration and resource growth potential to build on the excellent economics demonstrated by the recently completed PFS."***

## Regional Targeting

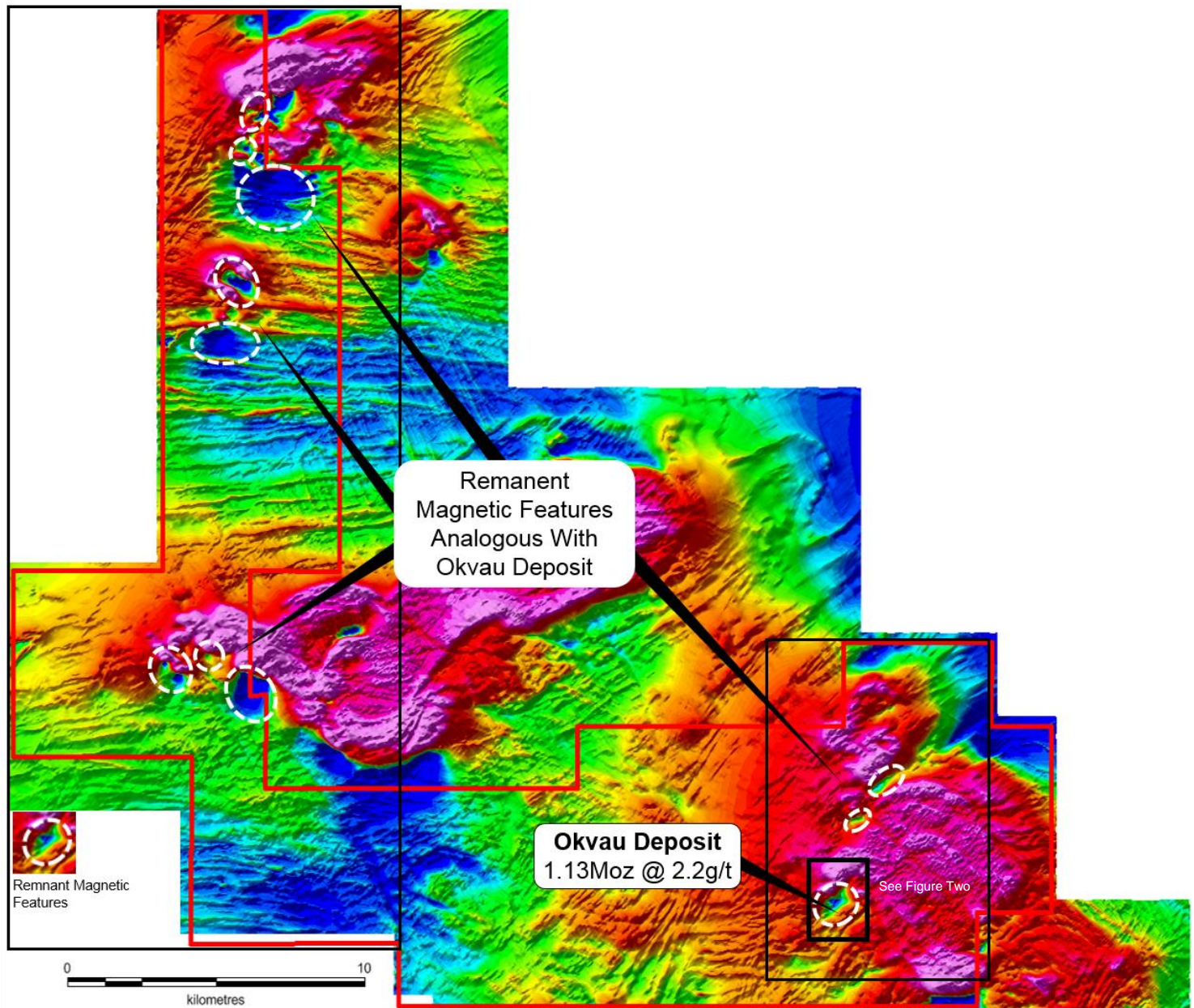
Although not representative of all areas of gold bearing sulphide mineralisation, numerous large remanent magnetic responses in the region readily highlight potential hydrothermal sulphide accumulations amenable to gold mineralisation that have developed during regional hydrothermal fluid migration and trapping (refer Figure One).

Renaissance has recently developed a new understanding of the important regional structural controls to these hydrothermal sulphide cells along with important local structural controls and pathfinder geochemical signatures. Collectively these represent the zones of highest gold mineralisation potential associated with the hydrothermal sulphide cells.

The areas identified have strong proximal gold-in-soils anomalies which support the association between the hydrothermal sulphide cells and gold mineralisation development (refer Figure Four). None of these areas have been subject to any drill testing whatsoever.

Renaissance is planning to rapidly advance these targets with prospect scale IP surveys designed to confirm sulphide rich targets at an appropriate scale for drill testing.

**Figure One | Okvau and O'Chhung License Area - Remanent Magnetic Features Analogous to Okvau Deposit**



Underlying image is 50m line spaced aeromagnetics (TMI-Reduced to Pole) identifying areas of magnetism (remanent) analogous with the Okvau Deposit

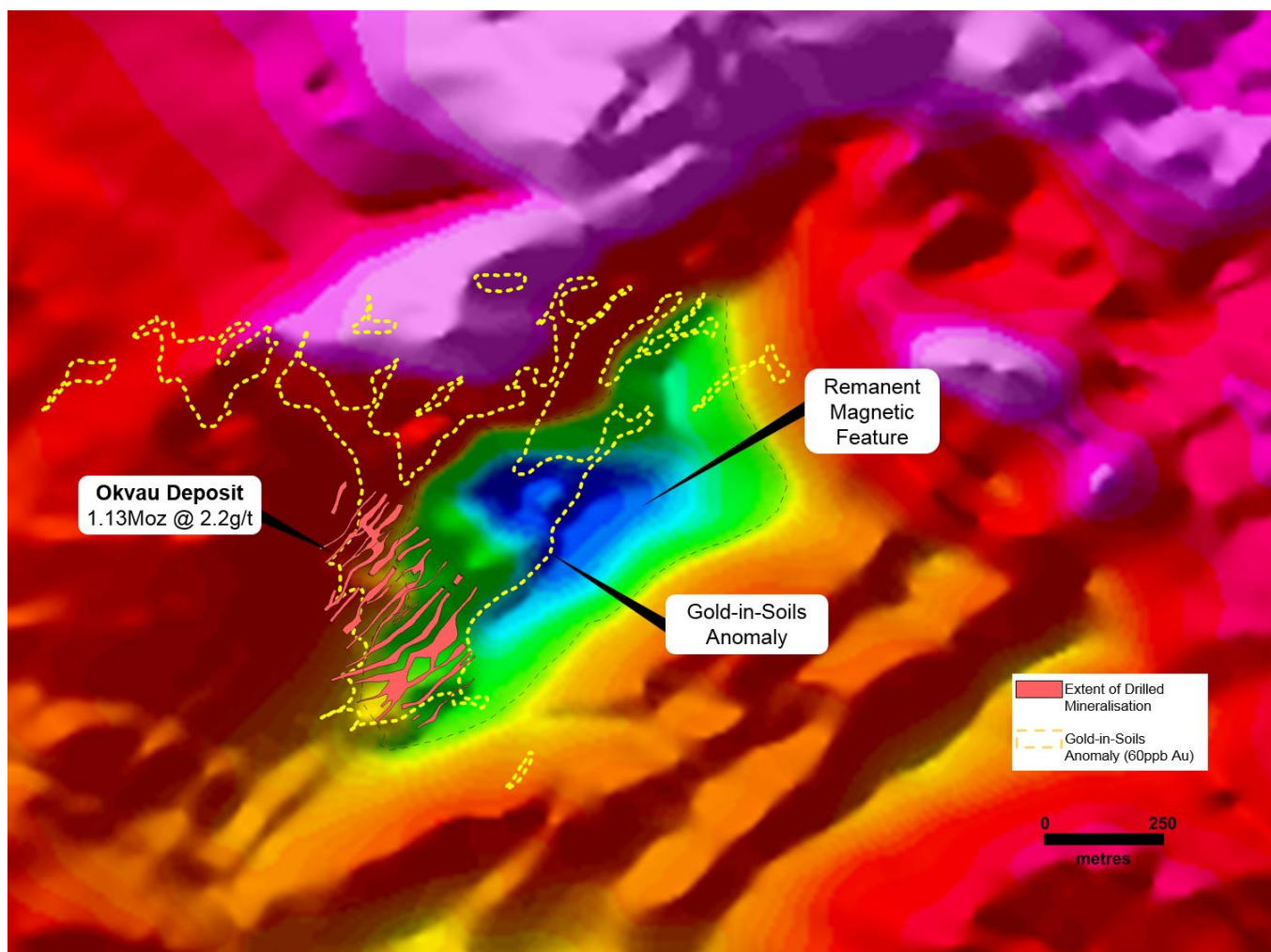


## Okvau Extensions

In particular the area north-east and north along strike from the existing resource envelope demonstrates scope for further extensional gold mineralisation that can rapidly grow the existing Okvau resource estimate of 15.8Mt @ 2.2g/t for 1.13MOz (refer Table One).

Recognition of a characteristic aeromagnetic response of the Okvau hydrothermal system along with contoured gold geochemistry supports the presence of a large area of possible extensions to known mineralisation (refer Figure Two). The magnetic (remanent) response identified by Renaissance's Geophysical Consultant (Terra Resources) over the Okvau Deposit area has been confirmed in the field as most likely being caused by the presence of fine grained sulphide (pyrrhotite) developed in the footprint of the intrusion related mineralising system. Contoured gold geochemistry is closely associated with the pyrrhotite (remanent) response (refer Figure Two).

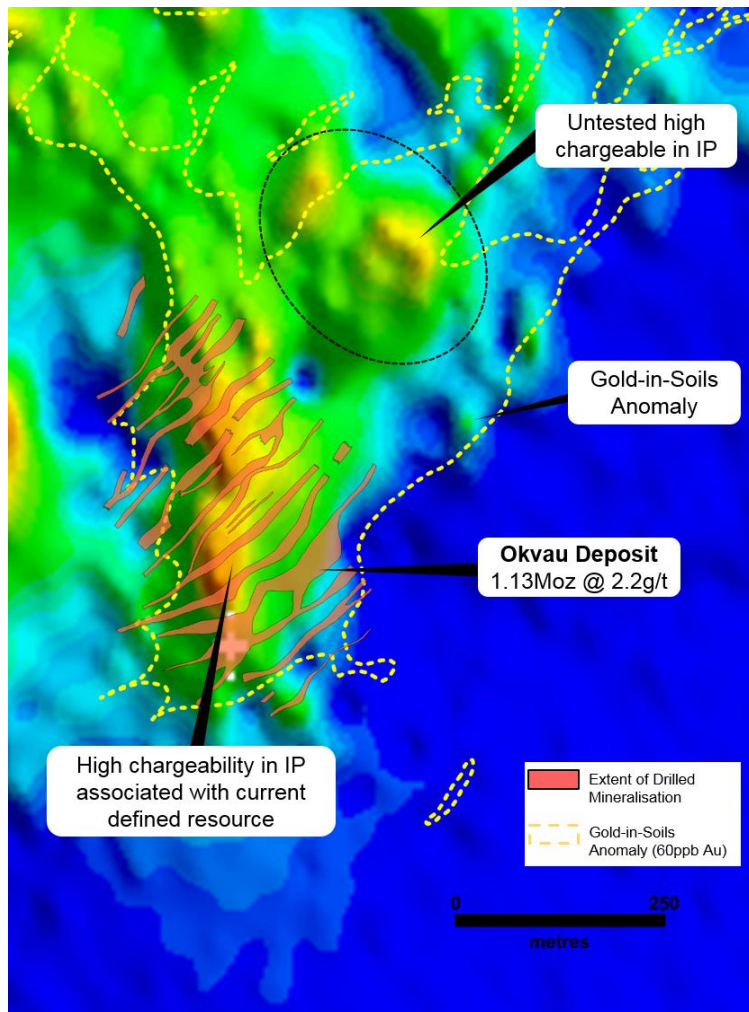
**Figure Two | Okvau Deposit - Soil Geochemistry and Resource Envelope over Remanent Magnetic Feature**



The slight offset of the remanent magnetic feature relative to known surface mineralisation in part represents the south-east dip to the mineralisation.

Most importantly, gradient array IP data confirms a strong chargeable and resistive response coincident with and extending beyond the area of artisanal workings and the existing resource envelope. The strong chargeable response indicates the presence of greater proportions of sulphide (refer Figure Three). Lower electrical resistivity response (i.e. higher conductivity) also supports the presence of higher sulphide content. The tenor of known gold mineralisation within the Okvau Deposit is strongly associated with high sulphide content.

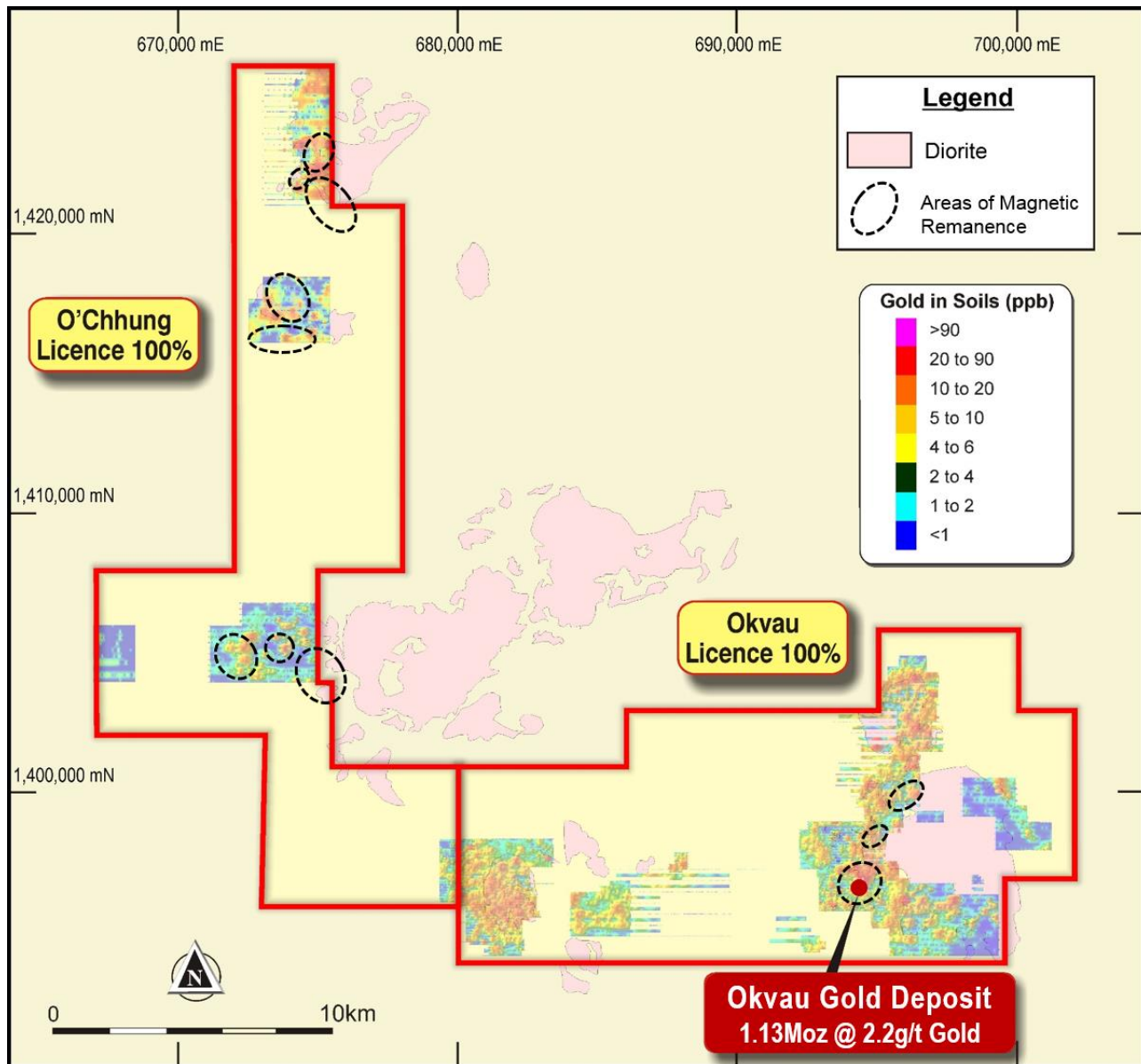
**Figure Three | Okvau Deposit - Soil Geochemistry and Resource Envelope over IP Chargeability**



Consequently the “Okvau-like” IP responses recorded contiguous with the Okvau resource envelope, and supported by strong gold-in-soils anomalism, represent exciting up-side potential for near term resource additions.

Renaissance is planning to undertake full coverage of the strong IP (gradient array) chargeability and low resistivity response zone with IP Dipole-Dipole and offset pole-dipole IP (3D-IP). This will effectively map the positions of the probable sulphide responses to direct follow-up drilling of the strongest and most extensive responses. **The IP survey is planned to be undertaken at the end of October/early November 2015.**

**Figure Four | Okvau & O'Chhung License Areas - Soil Geochemistry**





## Environmental and Social Impact Assessment

As part of the Pre-Feasibility Study, an initial Environmental and Social Impact Assessment ('ESIA') was undertaken by Renaissance's environmental consultant, Earth Systems. This initial ESIA determined that the proposed project has the potential to result in significant socioeconomic benefits at the national, regional and local community levels.

The initial ESIA allowed for the preparation of a proposed Terms of Reference ('TOR') for a full ESIA for submission and approval by the Ministry of Environment. Renaissance is pleased to announce that this TOR has been formally approved by the Ministry of Environment. This approval represents a key milestone in the ESIA process and has allowed for the commencement of the full ESIA. Following this approval further technical field surveys and studies have commenced. Earth Systems is managing the execution of ESIA along with local consultancy E&A Consultants. Earth Systems has previous experience in Cambodia and has managed ESIA's for numerous successful mining operations in the region.

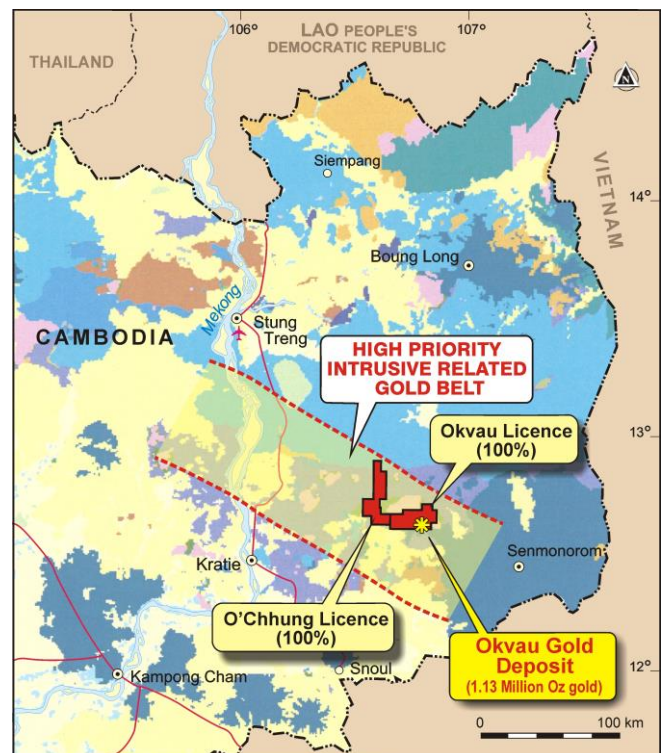
## About Cambodia

Cambodia is a constitutional monarchy with a constitution providing for a multi-party democracy. The population of Cambodia is approximately 14 million. The Royal Government of Cambodia, formed on the basis of elections internationally recognised as free and fair, was established in 1993. Elections are held every five (5) years with the last election held in July 2013.

Cambodia has a relatively open trading regime and joined the World Trade Organisation in 2004. The government's adherence to the global market, freedom from exchange controls and unrestricted capital movement makes Cambodia one of the most business friendly countries in the region.

The Cambodian Government has implemented a strategy to create an appropriate investment environment to attract foreign companies, particularly in the mining industry. Cambodia has a modern and transparent mining code and the government is supportive of foreign investment particularly in mining and exploration to help realise the value of its potential mineral value.

**Figure Five | Project Location**



Detailed information on all aspects of Renaissance Minerals projects can be found on the Company's website: [www.renaissanceminerals.com.au](http://www.renaissanceminerals.com.au).

For further information please contact  
Renaissance Minerals Limited  
Justin Tremain, Managing Director

## Competent Persons Statements

The information in this report that relates to Exploration Results is based on information compiled by Mr Craig Johnson, who is a consultant to the Company and who is a Member of The Australasian Institute of Geoscientists. Mr Craig Johnson has sufficient experience which is relevant to the style of mineralisation and type of deposits under consideration and to the activity which he is undertaking to qualify as a Competent Person as defined in the 2012 Edition of the 'Australasian Code for Reporting of Exploration Results, Mineral Resources and Ore Reserves'. Mr Craig Johnson consents to the inclusion in the report of the matters based on his information in the form and context in which it appears.

Reference is made to the Company's ASX release dated 27 July 2015 titled Okvau PFS Demonstrates Compelling Project Economics. All material assumptions underpinning the production target or the forecast financial information continue to apply and have not materially changed.

**Table One | Okvau Mineral Resource Estimate - July 2015**

<b>July 2015 JORC Resource (0.6g/t gold cut-off)</b>			
	<b>Tonnage (Mt)</b>	<b>Grade (g/t Au)</b>	<b>Gold (Koz)</b>
Indicated	13.2	2.3	962
Inferred	2.7	2.0	169
<b>Total</b>	<b>15.8Mt</b>	<b>2.2g/t</b>	<b>1,131</b>

The information in this report that relates to the Mineral Resources for the Okvau Gold Deposit was prepared by International Resource Solutions Pty Ltd (Brian Wolfe), who is a consultant to the Company, who is a Member of the Australian Institute of Geoscientists (AIG), and has sufficient experience relevant to the style of mineralisation and type of deposit under consideration and to the activity which he is undertaking to qualify as a Competent Person as defined by the 2012 edition of the "Australasian Code for Reporting of Exploration Results, Mineral Resources and Ore Reserves". Mr Wolfe consents to the inclusion of the matters based on his information in the form and context in which it appears.

## Appendix One | JORC Code, 2012 Edition | 'Table 1' Report

### Section 1 Sampling Techniques and Data

(Criteria in this section apply to all succeeding sections).

Criteria	JORC Code explanation	Commentary
Sampling techniques	<ul style="list-style-type: none"> <li>Nature and quality of sampling (eg cut channels, random chips, or specific specialised industry standard measurement tools appropriate to the minerals under investigation, such as down hole gamma sondes, or handheld XRF instruments, etc). These examples should not be taken as limiting the broad meaning of sampling.</li> <li>Include reference to measures taken to ensure sample representivity and the appropriate calibration of any measurement tools or systems used.</li> <li>Aspects of the determination of mineralisation that are Material to the Public Report.</li> <li>In cases where 'industry standard' work has been done this would be relatively simple (eg 'reverse circulation drilling was used to obtain 1 m samples from which 3 kg was pulverised to produce a 30 g charge for fire assay'). In other cases more explanation may be required, such as where there is coarse gold that has inherent sampling problems. Unusual commodities or mineralisation types (eg submarine nodules) may warrant disclosure of detailed information.</li> </ul>	<ul style="list-style-type: none"> <li>The Okvau Resource Estimate is based on a database of 132 drill holes, for a total of 33,351m. The database can be further broken down into 100 diamond drill holes for 30,046m and 32 reverse circulation (RC) drill holes for 3,305m.</li> <li>Intersection spacing for the Okvau Resource Estimate is typically 30m by 30m</li> <li>Diamond drilling is used to recover a continuous core sample of bedrock. Standard 1m length half-core samples are submitted for assay.</li> <li>RC drilling is used to collect 1m samples these are riffle split at the drill rig to produce a 3-5kg sub-sample.</li> <li>Sample preparation is carried out at a commercial off-site laboratory (ALS Phnom Penh) and assays are conducted at the ALS Vientiane assay laboratory</li> <li>Standards, duplicates and blanks are inserted in sample batches to test laboratory performance</li> </ul>
Drilling techniques	<ul style="list-style-type: none"> <li>Drill type (eg core, reverse circulation, open-hole hammer, rotary air blast, auger, Bangka, sonic, etc) and details (eg core diameter, triple or standard tube, depth of diamond tails, face-sampling bit or other type, whether core is oriented and if so, by what method, etc).</li> </ul>	<ul style="list-style-type: none"> <li>A truck-mounted Boart Longyear LF70 M/P drill rig is used to drill 4" RC holes and diamond core.</li> <li>Core diameter varies – HQ, HQ3, NQ, NQ2, NQ3, NTW and BTW used at various times. Core was oriented by means of a REFLEX ACT orientation tool, following a standard operating procedure, for all drilling subsequent to 2009. A spear tool was used for drilling pre-2009.</li> </ul>
Drill sample recovery	<ul style="list-style-type: none"> <li>Method of recording and assessing core and chip sample recoveries and results assessed.</li> <li>Measures taken to maximise sample recovery and ensure representative nature of the samples.</li> <li>Whether a relationship exists between sample recovery and grade and whether sample bias may have occurred due to preferential loss/gain of fine/coarse material.</li> </ul>	<ul style="list-style-type: none"> <li>All RC 1m samples and sub-samples (pre- and post-split) are weighed at the rig, to check that there is adequate sample material for assay. Any wet or damp samples are noted and that information is recorded in the database; samples are usually dry.</li> <li>Diamond core recovery is routinely monitored by comparing recovered core vs drill run lengths – recovery is consistently high. Recovery data are recorded on drill run lengths</li> <li>There is no relationship between sample recovery and grade</li> </ul>
Logging	<ul style="list-style-type: none"> <li>Whether core and chip samples have been geologically and geotechnically logged to a level of detail to support appropriate Mineral Resource estimation, mining studies and metallurgical studies.</li> <li>Whether logging is qualitative or quantitative in nature. Core (or costean, channel, etc) photography.</li> <li>The total length and percentage of the relevant intersections logged.</li> </ul>	<ul style="list-style-type: none"> <li>All RC chips and diamond core is routinely logged (qualitatively) by a geologist, to record details of regolith (oxidation), lithology, structure, mineralization and/or veining, and alteration. In addition, the magnetic susceptibility of all samples is routinely measured. All logging and sampling data are captured into a database, with appropriate validation and security features.</li> <li>A geotechnical log is produced for all diamond core</li> <li>Core has been logged to an appropriate level of detail by a geologist to support mineral resource estimation</li> <li>100% of core is logged, with the mineralised intersections logged to greater detail</li> <li>In addition to the geological logging, other features recorded are: location of bulk density samples; downhole camera survey calibration, intervals confidently oriented; and core condition.</li> </ul>
Sub-sampling techniques and sample preparation	<ul style="list-style-type: none"> <li>If core, whether cut or sawn and whether quarter, half or all core taken.</li> <li>If non-core, whether riffled, tube sampled, rotary split, etc and whether sampled wet or dry.</li> <li>For all sample types, the nature, quality and appropriateness of the sample preparation technique.</li> <li>Quality control procedures adopted for all sub-sampling stages to maximise representivity of samples.</li> <li>Measures taken to ensure that the sampling is representative of the in situ material collected, including for instance results for field duplicate/second-half sampling.</li> <li>Whether sample sizes are appropriate to the grain size of the material being sampled.</li> </ul>	<ul style="list-style-type: none"> <li>Most RC samples are dry and there is no likelihood of compromised results due to moisture.</li> <li>Diamond drill core is sawn in half with core split using a core saw; one half is preserved as a geological record, the other is sent for assay.</li> <li>All types of samples are prepared for assay at the NATA accredited ALS Cambodia sample prep facility in Phnom Penh; and that facility has been inspected, at the request of Renaissance, numerous times and most recently by Mr Brian Wolfe in July 2015. Samples are dried for a minimum of 12 hours at 100°C; crushed with a Boyd Crusher, to -2mm, with a rotary splitter attached, to deliver a 1.0-1.2kg split; which in turn is pulverized to -75µm by an Essa LM2 or LM5 Ring Mill. A standard &gt;90% pass rate is achieved (with particle size analysis performed on every fifteenth sample as a check).</li> <li>At least three field duplicate samples are collected at an RC drill rig to monitor sampling precision; while coarse crush duplicates of diamond core are generated at the sample prep stage (because of the need to preserve drill core).</li> </ul>



Criteria	JORC Code explanation	Commentary
		<ul style="list-style-type: none"> <li>This sample technique is industry norm, and is deemed appropriate for the material</li> </ul>
Quality of assay data and laboratory tests	<ul style="list-style-type: none"> <li>The nature, quality and appropriateness of the assaying and laboratory procedures used and whether the technique is considered partial or total.</li> <li>For geophysical tools, spectrometers, handheld XRF instruments, etc, the parameters used in determining the analysis including instrument make and model, reading times, calibrations factors applied and their derivation, etc.</li> <li>Nature of quality control procedures adopted (eg standards, blanks, duplicates, external laboratory checks) and whether acceptable levels of accuracy (ie lack of bias) and precision have been established.</li> </ul>	<ul style="list-style-type: none"> <li>All samples are sent to the NATA accredited ALS Laboratory in Vientiane, Laos, for fire assay (Au-AA25: 30g ore grade method, total extraction by fusion, with an AA finish); and most samples are also sent to the similarly accredited ALS Lab in Brisbane, Australia, for multi-element ICP analysis, after partial extraction by aqua regia digest (ME-ICP41: ICP-AES for As, Fe, Mn &amp; Zn; and ME-MS42: ICP-MS for Ag, Bi, Cu, Hg, Mo, Pb, Sb, Te &amp; W).</li> <li>Fire assay is considered a total gold assay</li> <li>This method has a lower detection limit of 0.01g/t gold</li> <li>All magnetic susceptibility measurements of drill samples are made with a Terraplus KT-10 magnetic susceptibility meter.</li> <li>An appropriate sample preparation and analytical quality control programme confirms that the gold fire assay values are of acceptable quality to underpin mineral resource estimation.</li> <li>Industry-standard QAQC protocols are routinely followed for all sample batches sent for assay, which includes the insertion of commercially available CRMs and blanks into all batches - usually 1 of each for every 20 field samples. Some blanks used are home-made from barren basalt or quarry granite. QAQC data are routinely checked before any associated assay results are reviewed for interpretation, and any problems are investigated before results are released to the market - no issues were raised with the results reported here.</li> <li>All assay data, including internal and external QA/QC data and control charts of standard, replicate and duplicate assay results, are communicated electronically. Reviews of QA/QC data by Mr Brian Wolfe concluded that the quality of assay data is sufficient to support reporting of the Okvau Resource Estimate</li> </ul>
Verification of sampling and assaying	<ul style="list-style-type: none"> <li>The verification of significant intersections by either independent or alternative company personnel.</li> <li>The use of twinned holes.</li> <li>Documentation of primary data, data entry procedures, data verification, data storage (physical and electronic) protocols.</li> <li>Discuss any adjustment to assay data.</li> </ul>	<ul style="list-style-type: none"> <li>The calculations of all significant intercepts (for drill holes) are routinely checked by senior management.</li> <li>Two twin holes confirm confidence in the existence and projection of mineralised intercepts over short ranges</li> <li>All field data associated with drilling and sampling, and all associated assay and analytical results, are archived in a relational database, with industry-standard verification protocols and security measures in place.</li> <li>Mr Brian Wolfe visited the site in June 2015 and visually verified the results in the assay database against mineralised intersections evident in the stored half core</li> </ul>
Location of data points	<ul style="list-style-type: none"> <li>Accuracy and quality of surveys used to locate drill holes (collar and down-hole surveys), trenches, mine workings and other locations used in Mineral Resource estimation.</li> <li>Specification of the grid system used.</li> <li>Quality and adequacy of topographic control.</li> </ul>	<ul style="list-style-type: none"> <li>Drill hole collar locations are first surveyed with a hand-held GPS instrument (which generates relatively inaccurate RL values), but the locations of all holes used in Mineral Resource estimates are verified or amended by proper survey using a differential GPS by and external contractor (with excellent accuracy in all dimensions). All locations are surveyed to the WGS84 UTM grid. Collar coordinates are routinely converted to a local grid (local N is approx. equivalent to UTM 045°), with an appropriate transformation about a common point - to simplify the interpretation of drill cross sections.</li> <li>Accuracy for all drill holes used in the Mineral Resource estimate is 20cm vertical and 10cm horizontal, which is acceptable for resource estimation</li> <li>The first 9 holes of the Okvau resource drill hole database were not surveyed downhole; but all subsequent holes were surveyed downhole at 25-30m intervals for all types of drilling, using a single-shot REFLEX survey tool (operated by the driller and checked by the supervising geologist).</li> <li>A topography surface was generated using the collar positions surveyed by DGPS; this was considered adequate</li> </ul>
Data spacing and distribution	<ul style="list-style-type: none"> <li>Data spacing for reporting of Exploration Results.</li> <li>Whether the data spacing and distribution is sufficient to establish the degree of geological and grade continuity appropriate for the Mineral Resource and Ore Reserve estimation procedure(s) and classifications applied.</li> <li>Whether sample compositing has been applied.</li> </ul>	<ul style="list-style-type: none"> <li>For the Okvau Resource Estimate, spacing of intercepts is nominally 30m by 30m</li> <li>This drill spacing is considered to be sufficient to establish geological and grade continuity appropriate for the declaration of Indicated Resources</li> <li>No samples within a "zone of interest" are ever composited. For the Okvau Resource Estimate, samples have been composited to 3m as discussed in Section 3.</li> </ul>
Orientation of data in relation to geological	<ul style="list-style-type: none"> <li>Whether the orientation of sampling achieves unbiased sampling of possible structures and the extent to which this is known, considering</li> </ul>	<ul style="list-style-type: none"> <li>Drill holes are usually designed to intersect target structures with a "close-to-orthogonal" intercept.</li> </ul>

Criteria	JORC Code explanation	Commentary
structure	<p>the deposit type.</p> <ul style="list-style-type: none"> <li>If the relationship between the drilling orientation and the orientation of key mineralised structures is considered to have introduced a sampling bias, this should be assessed and reported if material.</li> </ul>	<ul style="list-style-type: none"> <li>Drilling has been done at various orientations; moderately to steeply northwest dipping is the most common</li> <li>Most of the drill holes intersect the mineralised zones at sufficient angle for the risk of significant sampling orientation bias to be low.</li> </ul>
Sample security	<ul style="list-style-type: none"> <li>The measures taken to ensure sample security.</li> </ul>	<ul style="list-style-type: none"> <li>The chain of custody for all drill samples from the drill rig to the ALS Sample Prep facility in Phnom Penh is managed by Renaissance personnel. RC drill samples are transported from the drill site to the Okvau field camp, where core is logged and all samples are batched up for shipment to Phnom Penh.</li> <li>Sample submission forms are sent to the ALS Sample Prep facility in paper form (with the samples themselves) and also as an electronic copy. Delivered samples are reconciled with the batch submission form prior to the commencement of any sample preparation.</li> <li>ALS is responsible for shipping sample pulps from Phnom Penh to the analytical laboratories in Vientiane and Brisbane, and all samples are tracked via their Global Enterprise Management System.</li> <li>All bulk residues are stored permanently at the ALS laboratory in Vientiane, except for samples from the first 9 drill holes, which were submitted to Mineral Assay and Services Co in Thailand</li> </ul>
Audits or reviews	<ul style="list-style-type: none"> <li>The results of any audits or reviews of sampling techniques and data.</li> </ul>	<ul style="list-style-type: none"> <li>All QAQC data are reviewed routinely, batch by batch, and on a quarterly basis to conduct trend analyses, etc. Any issues arising are dealt with immediately and problems resolved before results are interpreted and/or reported.</li> <li>Comprehensive QAQC audits have been conducted on this project by Duncan Hackman (August 2009, February 2010 &amp; November 2011), SRK (February 2013) and Nola Hackman (January 2014).</li> <li>Mr Brian Wolfe reviewed the data for the Renaissance drilling up to July 2015 and concluded that there are no concerns about data quality.</li> </ul>

## Section 2 Reporting of Exploration Results

(Criteria listed in the preceding section also apply to this section).

Criteria	Explanation	Commentary
Mineral tenement and land tenure status	<ul style="list-style-type: none"> <li>Type, reference name/number, location and ownership including agreements or material issues with third parties such as joint ventures, partnerships, overriding royalties, native title interests, historical sites, wilderness or national park and environmental settings.</li> <li>The security of the tenure held at the time of reporting along with any known impediments to obtaining a licence to operate in the area.</li> </ul>	<ul style="list-style-type: none"> <li>The Okvau Project is comprised of two tenements: the Okvau Exploration Licence (No. 0187 MME MR EL) and the O Chhung Exploration Licence (No. 0185 MME MR EL), both of which are held (100%) in the name of Renaissance Minerals (Cambodia) Ltd, a wholly owned Cambodian subsidiary of Renaissance Minerals Ltd.</li> <li>The tenure is considered to be completely secure.</li> <li>The Okvau Exploration Licence is located within the broader Phnom Prich Wilderness Sanctuary area but located outside of the 'core zone'.</li> <li>The Royal Government of Cambodia (via the Ministry of Mines and Energy) is very supportive of the Project and has given assurances that mining will be allowed to proceed at Okvau.</li> </ul>
Exploration done by other parties	<ul style="list-style-type: none"> <li>Acknowledgment and appraisal of exploration by other parties.</li> </ul>	<ul style="list-style-type: none"> <li>Renaissance Minerals (Cambodia) Ltd was formerly named OZ Minerals (Cambodia) Ltd, a 100% owned subsidiary of OZ Minerals Ltd. OZ Minerals was formed in 2009 by the merger of Oxiana Ltd (who initiated the Okvau Project) and Zinifex.</li> <li>Oxiana and OZ Minerals completed the following work at Okvau between 2006 and 2011: a resource drill-out of the Okvau deposit; plus a regional geological interpretation of Landsat imagery; stream sediment geochemistry, with some soil sampling follow-up; airborne magnetic and radiometric surveys over both ELs, and various ground geophysical surveys (including gradient array IP); geological mapping and trenching; and the initial drill testing of various exploration targets.</li> </ul>
Geology	<ul style="list-style-type: none"> <li>Deposit type, geological setting and style of mineralisation.</li> </ul>	<ul style="list-style-type: none"> <li>The Okvau deposit is interpreted as an "intrusion-related gold system". It is hosted mostly in Cretaceous age diorite and, to a lesser extent, in surrounding hornfels (metamorphosed, fine-grained clastic sediments). Gold mineralization is hosted within a complex array of sulphide veins, which strike northeast to east-west, and dip at shallow to moderately steep angles, to the south and southeast.</li> <li>Moderate to high grade gold mineralisation is located within both the main shears and secondary linking faults and splays.</li> <li>Mineralisation is structurally controlled and mostly confined to the diorite. The highest grade intersections generally occur at the diorite-hornfels contact. A minor portion of the mineralisation within the Okvau Resource Estimate is present outside the diorite, in the metamorphosed sediments.</li> <li>The host diorite at Okvau is one of numerous similar Cretaceous-aged intrusions in eastern Cambodia, which are believed to be related to an ancient subduction zone that was located to the east, off the coast of current Vietnam.</li> </ul>
Drill hole information	<ul style="list-style-type: none"> <li>A summary of all information material to the understanding of the exploration results including a tabulation of the following information for all Material drill holes: <ul style="list-style-type: none"> <li>easting and northing of the drill hole collar</li> <li>elevation or RL (Reduced Level – elevation above sea level in metres) of the drill hole collar</li> <li>dip and azimuth of the hole</li> <li>down hole length and interception depth</li> <li>hole length.</li> </ul> </li> <li>If the exclusion of this information is justified on the basis that the information is not Material and this exclusion does not detract from the understanding of the report, the Competent Person should clearly explain why this is the case.</li> </ul>	<ul style="list-style-type: none"> <li>The Okvau Resource Estimate is based on a database of 132 drill holes, for a total of 33,351m. The database can be further broken down into 100 diamond drill holes for 30,046m and 32 reverse circulation (RC) drill holes for 3,305m.</li> <li>Intersection spacing for the Okvau Resource Estimate is typically 30m by 30m</li> </ul>
Data aggregation methods	<ul style="list-style-type: none"> <li>In reporting Exploration Results, weighting averaging techniques, maximum and/or minimum grade truncations (eg cutting of high grades) and cut-off grades are usually Material and should be stated.</li> <li>Where aggregate intercepts incorporate short lengths of high grade results and longer lengths of low grade results, the procedure used for such aggregation should be stated and some typical examples of such aggregations should be shown in detail.</li> <li>The assumptions used for any reporting of metal equivalent values should be clearly stated.</li> </ul>	<ul style="list-style-type: none"> <li>Compositing done the Okvau Resource Estimate is discussed in Section 3</li> </ul>
Relationship between mineralisation widths	<ul style="list-style-type: none"> <li>These relationships are particularly important in the reporting of Exploration Results.</li> </ul>	<ul style="list-style-type: none"> <li>The majority of drill holes intersect the mineralisation at a sufficient angle for the risk of sampling orientation bias to</li> </ul>



Criteria	Explanation	Commentary
and intercept lengths	<ul style="list-style-type: none"> <li>If the geometry of the mineralisation with respect to the drill hole angle is known, its nature should be reported.</li> <li>If it is not known and only the down hole lengths are reported, there should be a clear statement to this effect (eg 'down hole length, true width not known').</li> </ul>	be low
Diagrams	<ul style="list-style-type: none"> <li>Appropriate maps and sections (with scales) and tabulations of intercepts should be included for any significant discovery being reported. These should include, but not be limited to a plan view of drill hole collar locations and appropriate sectional views.</li> </ul>	<ul style="list-style-type: none"> <li>Appropriate maps are included in the body of this release.</li> </ul>
Balanced reporting	<ul style="list-style-type: none"> <li>Where comprehensive reporting of all Exploration Results is not practicable, representative reporting of both low and high grades and/or widths should be practiced to avoid misleading reporting of Exploration Results.</li> </ul>	<ul style="list-style-type: none"> <li>All significant exploration results for activity being reported on the Company's tenure are included in figures 1, 2 and 3.</li> </ul>
Other substantive exploration data	<ul style="list-style-type: none"> <li>Other exploration data, if meaningful and material, should be reported including (but not limited to): geological observations; geophysical survey results; geochemical survey results; bulk samples – size and method of treatment; metallurgical test results; bulk density, groundwater, geotechnical and rock characteristics; potential deleterious or contaminating substances.</li> </ul>	<ul style="list-style-type: none"> <li>Surface geological mapping and detailed structural studies have helped inform the geological model of the Okvau Deposit.</li> <li>References to IP geophysics refer to chargeability and resistivity results from various induced polarization geophysics methodologies. Current results refer to reprocessing of historical IP geophysics data.</li> <li>Renaissance has completed a Pre-Feasibility Study, the results of which are reported the release dated 27 July 2015. The PFS study included metallurgical, geotechnical and hydrological studies.</li> </ul>
Further work	<ul style="list-style-type: none"> <li>The nature and scale of planned further work (eg tests for lateral extensions or depth extensions or large-scale step-out drilling).</li> <li>Diagrams clearly highlighting the areas of possible extensions, including the main geological interpretations and future drilling areas, provided this information is not commercially sensitive.</li> </ul>	<ul style="list-style-type: none"> <li>Further drilling at the Okvau Deposit will be undertaken to test lateral extensions of the known mineralisation</li> <li>Further drilling will be undertaken to test new targets, as potential is recognized.</li> </ul>

### Section 3 Estimation and Reporting of Mineral Resources

(Criteria listed in the preceding section also apply to this section).

Criteria	Explanation	Commentary
Database integrity	<ul style="list-style-type: none"> <li>Measures taken to ensure that data has not been corrupted by, for example, transcription or keying errors, between its initial collection and its use for Mineral Resource estimation purposes.</li> <li>Data validation procedures used.</li> </ul>	<ul style="list-style-type: none"> <li>During a site visit, field observations were compared with the corresponding information in the database.</li> <li>Visual checks were made to confirm that mineralised intervals evident in the drill core corresponded with assay results in the database.</li> <li>Collar positions in UTM grid coordinates (Indian 60 (Zone48N) projection) were checked on the ground by hand held GPS to confirm positional accuracy.</li> </ul>
Site visits	<ul style="list-style-type: none"> <li>Comment on any site visits undertaken by the Competent Person and the outcome of those visits.</li> <li>If no site visits have been undertaken indicate why this is the case.</li> </ul>	<ul style="list-style-type: none"> <li>A site visit was undertaken by Mr Brian Wolfe, the competent person, between 2<sup>nd</sup> and 6<sup>th</sup> June 2015. Mr Brian Wolfe visited the Okvau project site, the ALS Sample Preparation Laboratory in Phnom Penh, Cambodia and the ALS Assay Laboratory in Vientiane, Laos</li> <li>As no diamond drilling occurred during the site visit, the sampling process was not directly examined. The core management facilities were observed, and appeared to be organised and well suited to managing the logging and sampling procedures efficiently.</li> <li>Both laboratories appeared clean and organised with good housekeeping.</li> <li>The conclusion from these assessments is that there are no concerns about data quality sufficient to affect the currently designated classification of the resources.</li> </ul>
Geological interpretation	<ul style="list-style-type: none"> <li>Confidence in (or conversely, the uncertainty of) the geological interpretation of the mineral deposit.</li> <li>Nature of the data used and of any assumptions made.</li> <li>The effect, if any, of alternative interpretations on Mineral Resource estimation.</li> <li>The use of geology in guiding and controlling Mineral Resource estimation.</li> <li>The factors affecting continuity both of grade and geology.</li> </ul>	<ul style="list-style-type: none"> <li>The mineralisation is hosted within a Cretaceous diorite intrusion emplaced in a Triassic metasedimentary package. Gold grade continuity is best defined along the traces of planar shears within the diorite that extend into the metasediments.</li> <li>The mineralisation domain to constrain the main part of the estimation was modelled using a gold grade indicator mineralization shell. The indicator shell was based on a 0.4g/t Au cut off at a 32.5% probability. Anisotropy for constructing the grade shell was determined using interpreted structural controls determined by Cowan in his 2014 structural and mineralization study. Restrictions were added to prevent the grade shell projecting too far beyond the limits of the diorite (the main lithological control on mineralisation).</li> <li>Alternative grade shells were generated by varying the cut-off grade and the probability. The continuity of these alternative interpretation was variable according to the chosen parameters and the chosen grade shell was felt to be the most representative of the mineralization continuity and 3D geometry.</li> </ul>
Dimensions	<ul style="list-style-type: none"> <li>The extent and variability of the Mineral Resource expressed as length (along strike or otherwise), plan width, and depth below surface to the upper and lower limits of the Mineral Resource.</li> </ul>	<ul style="list-style-type: none"> <li>The mineralization has been delineated over a strike length of 500m across a width of 400m and to a depth of 480m below surface.</li> </ul>
Estimation and modelling techniques	<ul style="list-style-type: none"> <li>The nature and appropriateness of the estimation technique(s) applied and key assumptions, including treatment of extreme grade values, domaining, interpolation parameters and maximum distance of extrapolation from data points. If a computer assisted estimation method was chosen, include a description of computer software and parameters used.</li> <li>The availability of check estimates, previous estimates and/or mine production records and whether the Mineral Resource estimate takes appropriate account of such data.</li> <li>The assumptions made regarding recovery of by-products.</li> <li>Estimation of deleterious elements or other non-grade variables of economic significant (eg. Sulphur for acid mine drainage characterization).</li> <li>In the case of block model interpolation, the block size in relation to the average sample spacing and the search employed.</li> <li>Any assumptions behind modelling of selective mining units.</li> <li>Any assumption about correlation between variables.</li> <li>Description of how the geological interpretation was used to control the resource estimates.</li> <li>Discussion of basis for using or not using grade cutting or capping.</li> <li>The process of validation, the checking process used, the comparison of model data to drillhole data, and use of reconciliation data if available.</li> </ul>	<ul style="list-style-type: none"> <li>Ordinary kriging with uniform conditioning of the ordinary kriged grades to calculate recoverable resources was chosen as the most appropriate estimation method.</li> <li>The mineralisation domain to constrain estimation was modelled as described above.</li> <li>Mineralisation was constrained to within approximately 25m of the contact of the diorite system.</li> <li>Composite length of 3m.</li> <li>Variogram model fitted via a Gaussian transform of the composite grades.</li> <li>Block size 30mE x 20mN x 10mRL.</li> <li>Two pass estimation strategy.</li> <li>Sample neighbourhood of dimensions 100mE x 100mN x 20mRL and 300mE x 300mN x 100mRL for pass 1 and 2 respectively.</li> <li>Composite numbers of 32 for 1<sup>st</sup> pass and between 8 and 32 for 2<sup>nd</sup> pass.</li> <li>Whole block grades estimated by Ordinary Kriging.</li> <li>Gold was the only element estimated.</li> <li>Composite grades were capped at 26g/t.</li> <li>Density values were assigned as 2.81t/m<sup>3</sup> for the material above the top of fresh rock and 2.84t/m<sup>3</sup> for fresh material.</li> <li>A topographical surface has been surveyed which has been determined to fully account for depletion by artisanal</li> </ul>

Criteria	Explanation	Commentary
		<p>mining.</p> <ul style="list-style-type: none"> <li>Uniform Conditioning (based on an assumed Selective Mining Unit of 5m x 5m x 5m) was applied to the Ordinary Kriged block grades model to calculate recoverable grades and tonnes.</li> <li>Previous resource estimates are available (SRK 2013) and differences have been noted between the two estimates in terms of grade, tonnage and resource classification which can be ascribed to evolution in the understanding of the structural architecture, additional drill hole data and differences in the domaining approach.</li> <li>The grade estimates were statistically and visually validated prior to acceptance.</li> </ul>
Moisture	<ul style="list-style-type: none"> <li>Whether the tonnages are estimated on a dry basis or with natural moisture, and the method of determination of the moisture content.</li> </ul>	<ul style="list-style-type: none"> <li>Tonnages are estimated on a dry basis, using either 2.81t/m<sup>3</sup> or 2.84t/m<sup>3</sup> according to weathering status.</li> </ul>
Cut-off parameters	<ul style="list-style-type: none"> <li>The basis of the adopted cut-off grade(s) or quality parameters applied.</li> </ul>	<ul style="list-style-type: none"> <li>Based on the results of the Pre-Feasibility Study completed by Renaissance, a cut-off of 0.60g/t was chosen as the base case for reporting Mineral Resources.</li> </ul>
Mining factors or assumptions	<ul style="list-style-type: none"> <li>Assumptions made regarding possible mining methods, minimum mining dimensions and internal (or, if applicable, extraction) mining dilution. It is always necessary as part of the process of determining reasonable prospects for eventual economic extraction to consider potential metallurgical methods, but the assumptions made regarding mining methods and parameters when estimating Mineral Resources may not always be rigorous. Where this is the case, this should be reported with an explanation of the basis of the mining assumptions made.</li> </ul>	<ul style="list-style-type: none"> <li>The methodology and parameters are based on the assumption that the deposit can be mined by open-pit methods, and even the choice of the 0.4g/t Au threshold for defining the mineralisation domain was guided by discussions of what cut-off grades would be appropriate for open-pit mining of the deposit.</li> <li>An SMU dimension of 5mE x 5mN x 5mRL has been selected for recoverable resources calculation.</li> </ul>
Metallurgical factors or assumptions	<ul style="list-style-type: none"> <li>The basis for assumptions or predictions regarding metallurgical amenability. It is always necessary as part of the process of determining reasonable prospects for eventual economic extraction to consider potential metallurgical methods, but the assumptions regarding metallurgical treatment processes and parameters made when reporting Mineral Resources may not always be rigorous. Where this is the case, this should be reported with an explanation of the basis of the metallurgical assumptions made.</li> </ul>	<ul style="list-style-type: none"> <li>Renaissance has undertaken metallurgical test work at the Bureau Veritas Minerals Pty Ltd laboratories in Perth, Western Australia under the management of Renaissance's metallurgical consultant Metpro Consultants Pty Ltd. Total gold extraction of between 85% and 90% was achieved by coarse grinding and flotation, fine grinding of a low mass concentrate and conventional cyanide leaching of concentrate and flotation tails. Refer to the results on the Pre-Feasibility Study for further detail of the metallurgical test work results.</li> </ul>
Environmental factors or assumptions	<ul style="list-style-type: none"> <li>Assumptions made regarding possible waste and process residue disposal options. It is always necessary as part of the process of determining reasonable prospects for eventual economic extraction to consider the potential environmental impacts of the mining and processing option. While at this stage the determination of potential environmental impact, particularly for a greenfields project, may not always be well advanced, the status of early consideration of these potential environmental impacts should be reported. Where these aspects have not been considered this should be reported with an explanation of the environmental assumptions made.</li> </ul>	<ul style="list-style-type: none"> <li>Artisanal surface mining is practiced in the project area, so that the surface expression of the deposit is represented by disturbed ground.</li> <li>Due to the flat and reasonably open topography of the area, and the lack of land conflict issues, it is assumed that waste and process residue would not preclude the project from progressing.</li> <li>Renaissance has undertaken an Initial Environmental Impact Assessment and has commenced a full Environmental Impact Assessment in order to obtain approvals to commence extraction.</li> </ul>



Criteria	Explanation	Commentary
Bulk density	<ul style="list-style-type: none"> <li>Whether assumed or determined. If assumed, the basis for the assumptions. If determined, the method used, whether wet or dry, the frequency of the measurements, the nature, size and representativeness of the samples.</li> <li>The bulk density for bulk material must have been measured by methods that adequately account for void spaces (vugs, porosity, etc.), moisture and differences between rock and alteration zones within the deposit.</li> <li>Discuss assumptions for bulk density estimates used in the evaluation process of the different materials.</li> </ul>	<ul style="list-style-type: none"> <li>8,780 dry bulk density measurements were taken for selected core samples, using the immersion method.</li> <li>The measurements have been sub-divided into fresh and above fresh samples.</li> <li>Based on the above the bulk densities have been assigned as either 2.81t/m<sup>3</sup> or 2.84t/m<sup>3</sup>.</li> </ul>
Classification	<ul style="list-style-type: none"> <li>The basis for the classification of the Mineral Resources into varying confidence categories.</li> <li>Whether appropriate account has been taken of all relevant factors (ie. Relative confidence in tonnage/grade estimations, reliability of input data, confidence in continuity of geology and metal values, quality, quantity and distribution of the data).</li> <li>Whether the result appropriately reflects the Competent Person's view of the deposit.</li> </ul>	<ul style="list-style-type: none"> <li>Based on the confidence in geological continuity confidence, data quality, and the sampling density, the estimation has been classified as Indicated and Inferred as set out in the report.</li> <li>The result appropriately reflects the Competent Person's view of the deposit.</li> </ul>
Audits or reviews	<ul style="list-style-type: none"> <li>The results of any audits or reviews of Mineral Resource estimates.</li> </ul>	<ul style="list-style-type: none"> <li>No audits or reviews of the Mineral Resource estimate have taken place.</li> </ul>
Discussion of relative accuracy / confidence	<ul style="list-style-type: none"> <li>Where appropriate, a statement of the relative accuracy and confidence level in the Mineral Resource estimate using an approach or procedure deemed appropriate by the Competent Person. For example, the application of statistical or geostatistical procedures to quantify the relative accuracy of the resource within stated confidence limits, or, if such an approach is not deemed appropriate, a qualitative discussion of the factors that could affect the relative accuracy and confidence of the estimate.</li> <li>The statement should specify whether it relates to global or local estimates, and, if local, state the relevant tonnages, which should be relevant to technical and economic evaluation. Documentation should include assumptions made and the procedures used.</li> <li>These statement of relative accuracy and confidence of the estimate should be compared with production data, where available.</li> </ul>	<ul style="list-style-type: none"> <li>The Indicated and Inferred classifications assigned locally to the estimation are considered sufficient to represent the relative accuracy and confidence. No quantitative analysis in confidence limits has been undertaken.</li> <li>Production data are not available for Okvau.</li> </ul>