

October 15, 2010

**Fast Facts**  
ASX Code: RNS  
Shares on issue: 62.2 million  
Cash at bank: \$5 million (Sept 2010)

**Board & Management**  
Rick Hart, Chairman  
Justin Tremain, Managing Director  
Mel Ashton, Non-Executive Director  
Shane Hibbird, Exploration Manager  
Hamish Halliday, Consultant  
Steve Parsons, Consultant

**Shareholders**  
Gryphon Minerals  
Management  
Catalpa Resources  
Newmont  
Aust. & Overseas Institutional Investors  
Top 5 ~ 45%

## Company Highlights

- Near term gold production
- Dominant strategic tenement holdings
- Aggressive exploration
- Proven management

**Registered Office**  
Freemasons Hall  
181 Roberts Road  
SUBIACO WA 6008

T: +61 (08) 9286 6300  
F: +61 (08) 9286 6399  
W: [www.renaissanceminerals.com.au](http://www.renaissanceminerals.com.au)  
E: [admin@renaissanceminerals.com.au](mailto:admin@renaissanceminerals.com.au)



**Renaissance**  
minerals limited

## High Grade Radio Drilling Intersection and Significant Regional Results

- **Diamond drilling at the Radio Gold Mine has intersected high grade mineralisation of 0.8m @ 30.51g/t Au**
- **Drill testing of two prospects at the Mt Rankin Project (50 kilometres south of the Radio Gold Mine) has intersected significant gold mineralisation**
- **Results at Mt Rankin include 5m @ 9.74g/t Au from 91m at the East Edwards Find Prospect and 4m @ 2.80g/t Au from 88m at the Black & White Prospect**
- **Both the Black & White Prospect and East Edwards Find Prospect remain open along strike and down dip**
- **Drilling program on the recently acquired Pinjin Gold Project to commence in November 2010**

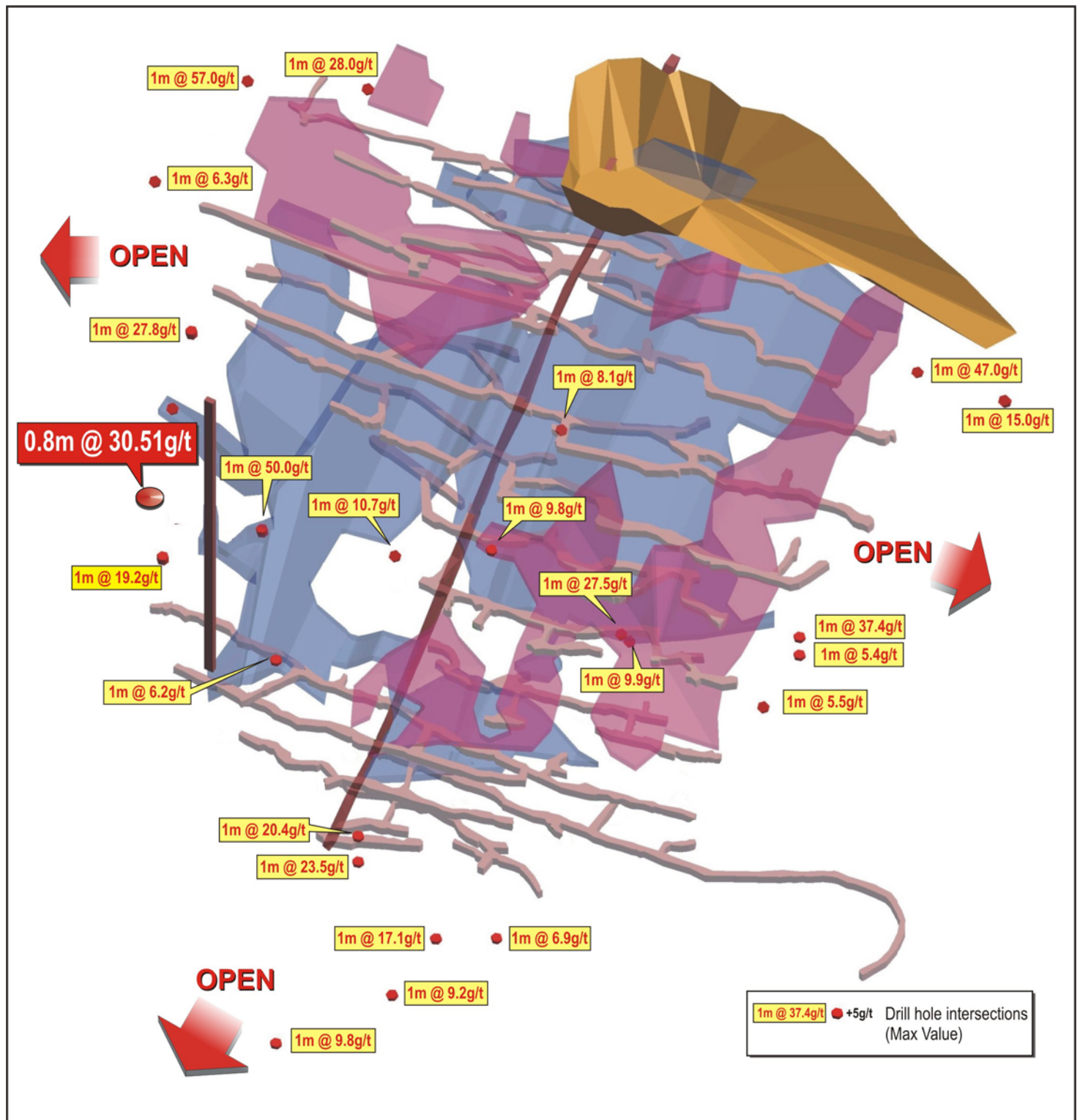
Australian gold exploration company, **Renaissance Minerals Limited** (ASX code: RNS) is pleased to announce results from the recent Southern Cross drilling program. The drilling program included the first diamond cores holes to be drilled into the Radio Gold Mine and RC drilling to test two exploration targets within the Mt Rankin Project (the Black & White Prospect and the East Edwards Find Prospect). The Mt Rankin Project is located approximately 50 kilometres south of the Radio Gold Mine. Refer Appendix One for location map.

### Radio Drilling

Three diamond core holes were drilled at the Radio Gold Mine to confirm the high grade gold mineralisation extends beyond the limits of the historical mine workings. The initial drill hole was successful in intersecting **0.8m @ 30.51g/t gold from 103.6 metres**. This hole was designed to test an area that is likely to be mined as part of the Company's proposed bulk sampling / trial mining campaign.

Refer to Table One for complete drill results.

**Figure One: Radio Gold Mine Long Section**



The Company is currently finalising submissions for various regulatory approvals to allow it to commence dewatering, refurbishment and trial mining of the Radio Gold Mine.

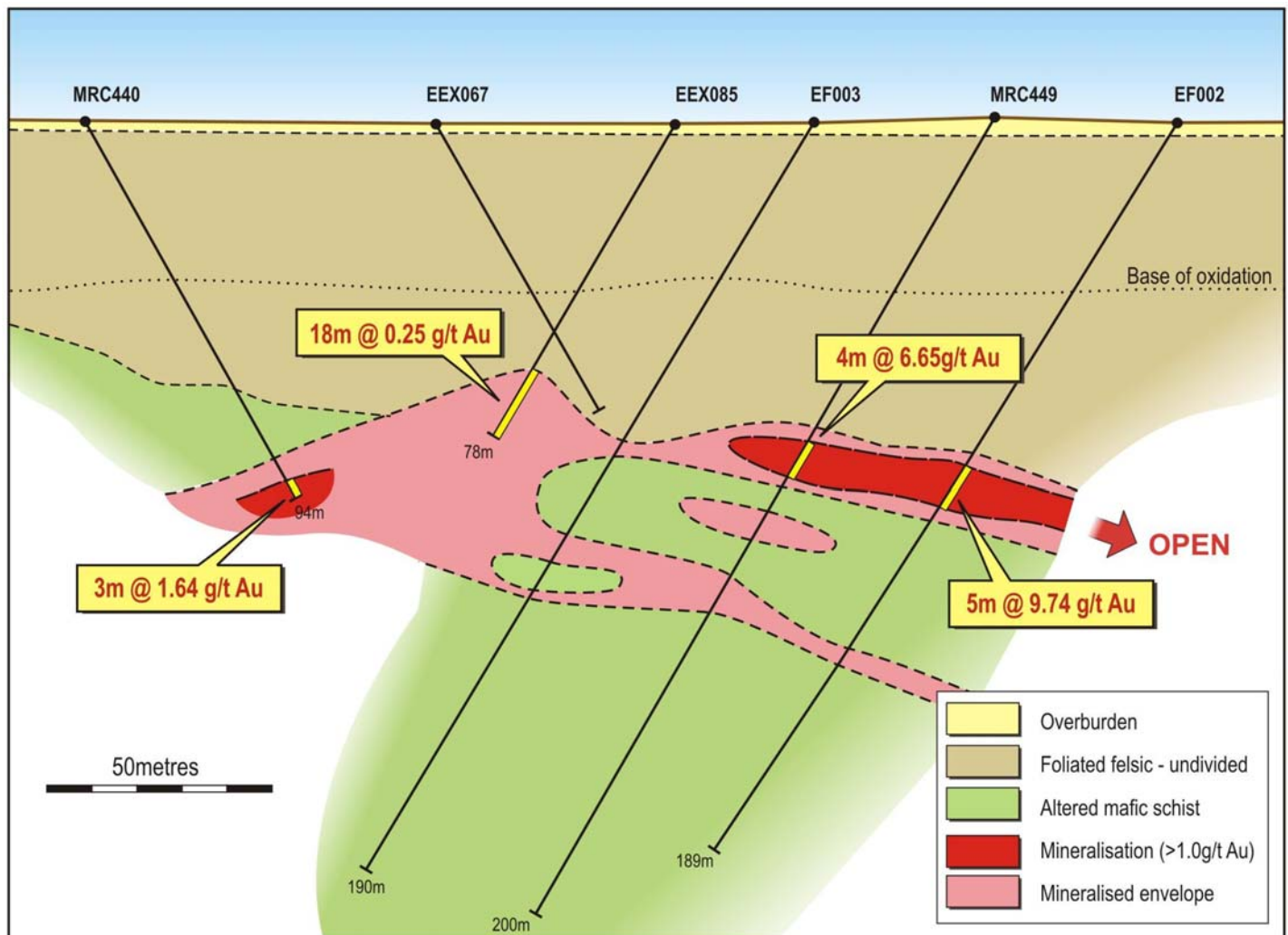
## Mt Rankin Drilling

### East Edwards Find Prospect

Historical drilling undertaken by Sons of Gwalia at the East Edwards Find Prospect had identified laterite and supergene gold mineralisation. Sons of Gwalia undertook limited follow up deeper drilling targeting primary mineralisation interpreted to be vertical dipping and trending north-south.

RC drilling undertaken by Renaissance at East Edwards Find has successfully intersected shallow dipping north-east trending high grade mineralisation in fresh rock. The drilling intersected **5m @ 9.74g/t Au from 91 metres (including 1m @ 35.64g/t Au from 91 metres)** beneath a historical intersection of 4m @ 6.65g/t Au from 82 metres. Mineralisation is open along strike to the north-east and down dip. Refer to Table 2 for complete drill intersections.

**Figure Two: East Edwards Find Prospect Section**



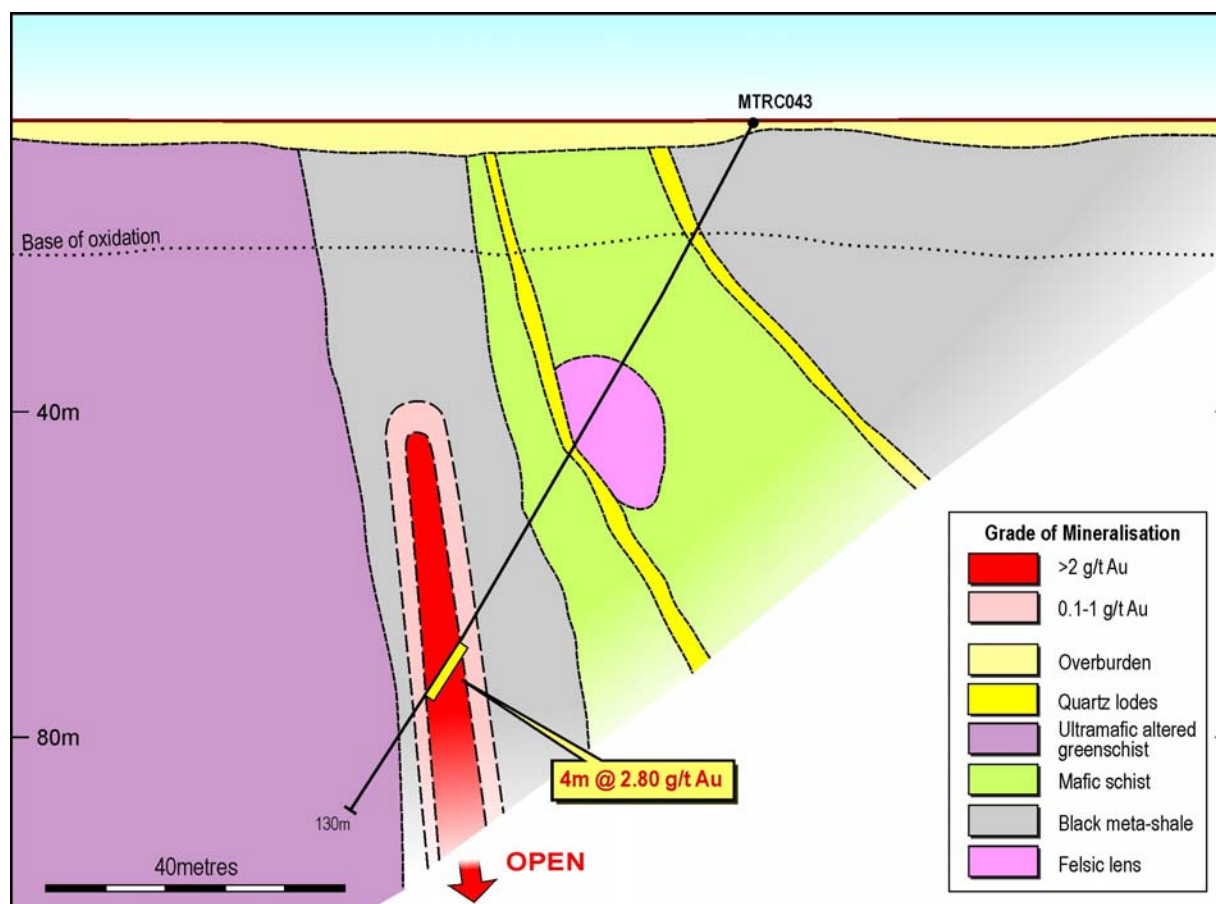
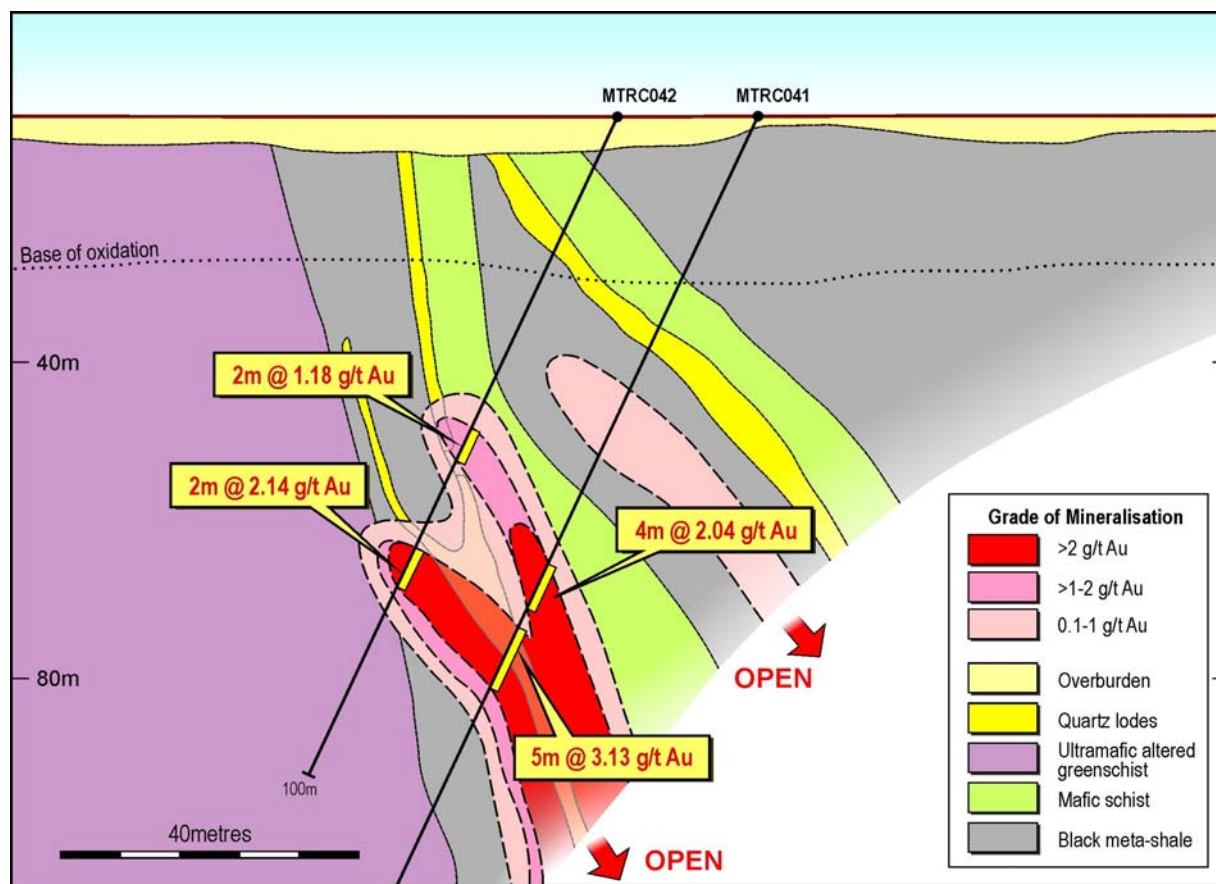
### Black & White Prospect

Drilling at the Black & White Prospect was designed to follow up the discovery hole which intersected 4m @ 2.04g/t Au from 71m and 5m @ 3.13g/t Au from 79m (refer ASX announcement dated 21 June 2010).

Refer to Table 2 for complete drill intersections, highlights include:

- 2m @ 2.14g/t gold from 71m
- 4m @ 2.80g/t gold from 88m

Figure Three & Four: Black and White Prospect Section





The intersections are in the hanging wall of the regionally significant north-south striking Greenmount Fault which is associated with a number of the Southern Cross gold deposits. The Transvaal, New Zealand Gully, Golden Pig gold mines (collectively +1 million ounce gold endowment) to the north are all along strike from the Black & White Prospect and also associated with the Greenmount Fault.

### **Southern Cross Project - Background**

The Company's Southern Cross tenement package covers approximately 700km<sup>2</sup> of the highly prospective Southern Cross Greenstone Belt in Western Australia. The tenement package includes the Company's Radio Project and the Mt Rankin Project.

The Radio Project is centred on the historic high grade Radio Gold Mine located approximately 40 kilometres north of the town of Southern Cross. Prior to its closure in 1974, the Radio Gold Mine produced over 71,000 ounces of gold at an average grade of 38.5g/t gold. It was mined to a vertical depth of just 105 metres and the high grade mineralisation remains open along strike and at depth.

The Mt Rankin Project is located approximately 15 kilometres south west of the town of Southern Cross. The project contains the same rock sequence and fault structures that host major gold mines in the Southern Cross region. Over two million ounces of gold have been produced within 12 kilometres of the Mt Rankin Project.

### **Pinjin Gold Project**

Renaissance's experienced geological team is currently planning a RC/DD drilling program for the recently acquired Pinjin Gold Project to follow up Newmont's previous intersection of 5.9m @ 7.2g/t Au. It is currently anticipated that this **drilling program will commence during November 2010.**

Managing Director, Justin Tremain commented:

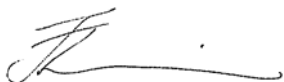
"We are extremely pleased with these drilling results from the initial exploration program at our Southern Cross Project. The diamond drilling at the Radio Gold Mine confirms the presence of high grade gold outside of the historic mine workings. The regional exploration results at Mt Rankin demonstrate the potential of the Southern Cross tenement holding.

The approval process for the dewatering and refurbishment of the Radio Gold Mine is progressing well with final submissions to various regulatory bodies expected to be made in the next few weeks. We expect to have all permitting in place before year end.

We are also looking forward to the commencement of drilling in the coming weeks at the Pinjin Gold Project which we recently acquired from Newmont."

Detailed information on all of Renaissance Minerals projects can be found on the Company's website at [www.renaissanceminerals.com.au](http://www.renaissanceminerals.com.au).

Yours faithfully  
**Renaissance Minerals Limited**



**Justin Tremain**  
**Managing Director**

The information in this report that relates to Exploration Results, Mineral Resources or Ore Reserves is based on information compiled by Mr Shane Hibbird, who is a Member of The Australasian Institute of Mining and Metallurgy. Mr Shane Hibbird is a full time employee of the company. Mr Shane Hibbird has sufficient experience which is relevant to the style of mineralisation and type of deposits under consideration and to the activity which he is undertaking to qualify as a Competent Person as defined in the 2004 Edition of the 'Australasian Code for Reporting of Exploration Results, Mineral Resources and Ore Reserves'. Mr Shane Hibbird consent to their inclusion in the report of the matters based on his information in the form and context in which it appears.

**Table One: Diamond Drill Hole Summary - Radio Gold Mine**

Hole Name	Easting	Northing	Azi	Dip	From (m)	To (m)	Interval (m)	Gold (g/t)
RDDD99	699117	6577947	300	60	103.6	104.4	0.8	30.51
RDRCD100	699246	6579003	300	60	156.2	156.7	0.5	1.03
RDRCD101	699353	6577946	300	60				Hole terminated

- Notes:
1. Assaying conducted by Genalysis Laboratory Services using industry standard 50g lead collection fire assay with AAS finish.
  2. Reference standards, duplicates and blank samples are routinely inserted; quality control samples are routinely monitored.

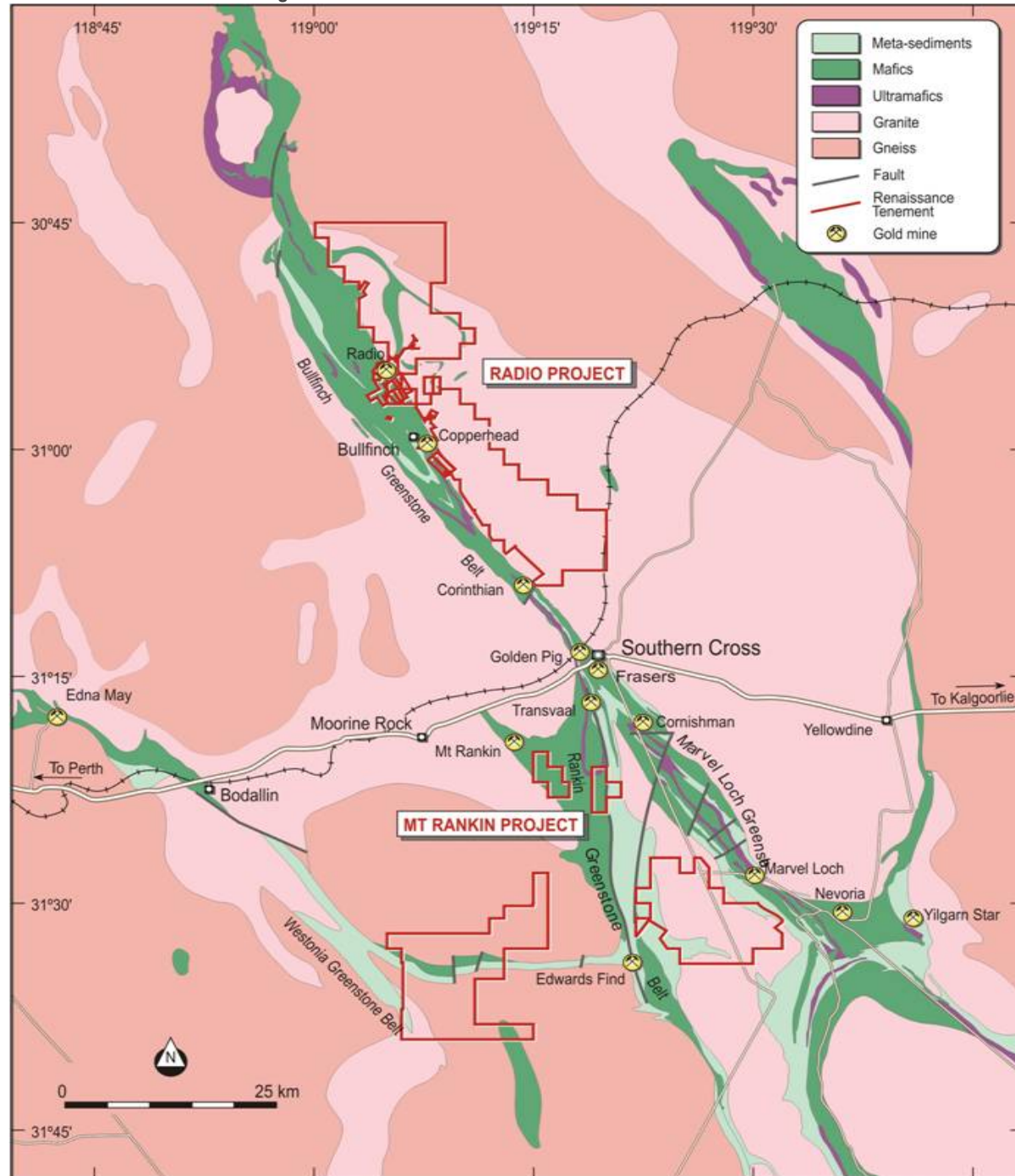
**Table Two: Reverse Circulation Drill Hole Summary - Mt Rankin Project**

Prospect	Hole Name	Easting	Northing	Azi	Dip	From (m)	To (m)	Interval (m)	Gold (g/t)
Black & White	MTRC042	721931	6526100	270	60	50	52	2	1.18
						71	73	2	2.14
East Edward's Find	MTRC043	721950	6526069	270	60	88	92	4	2.80
	EF001	726466	6505139	250	60				NSR
	EF002	726466	6505009	250	60	91	96	5	9.74
						104	106	2	1.25
						141	143	2	1.25
	EF003	726443	6505131	250	60				NSR

- Notes:
1. Samples are 1 metres
  2. Assaying conducted by Genalysis Laboratory Services using industry standard 50g lead collection fire assay with AAS finish.
  3. Reference standards, duplicates and blank samples are routinely inserted; quality control samples are routinely monitored.
  4. NSR - No significant result (<1g/t)

## Appendix One: Southern Cross Project Location Map

### Southern Cross Tenement Package



**Mt Rankin Project Location**

